



## Information Architecture:

Information architecture assimilates information gathered from project research, competitive analysis, and the user-persona definitions, into an organized blueprint for Add<sup>em</sup> Atom. The information architecture contains a conceptual site map and flow charts illustrating various user processes, along with preliminary wire frames which have been developed to define specific content placement, including information layout, site navigation, user interactions, visual design, etc.

## Site Map:

Site maps are ways to visually represent how different pages, sections, and sub-sections within a website (or application), correlate to one another in regards to their hierarchal arrangement of content and subject matter that is contained within. Particularly, the site map shows all of Add<sup>em</sup> Atom's paths, in terms of the global-navigation, sub-level navigation, and other interactive options available to the user. The order and structure of this Online-Tutorial is represented within the site map and is visually arranged according to how the topics and pages relate to one-another in regards to content. All pages and sections have been given a unique numeric identification that marks them based on their chronological succession from the "Introduction" page.



and all project creatives such as artwork, animations, illustrations, images, sounds, and other content are copyright protected.  
© 2007 Trent Wyman



### Process Flow Charts:

Process flow charts illustrate specific steps and procedures that a user will become involved with as they work through the tutorials and activities within Add'em Atom. The charts provide a means for understanding the behavior of different processes, program functions, and potential user-scenarios simply by illustrating the “step-by-step” logic behind how a script or application interacts with its environment, the user, and other devices such as when querying a database to delivery specific, requested content.

### Wire Frames:

Wire frames are important tools to use, especially when dealing with the design and layout of information within a specifically defined area such as a web page, table-cell, div element, i-frame, etc. The wire frames provide a “loose” glimpse of what a page or section of a website (or application) might look like upon the addition of general content such as text, image-placeholders, graphic areas, etc. along with the inclusion of design factors like key project and user-centered design requirements.

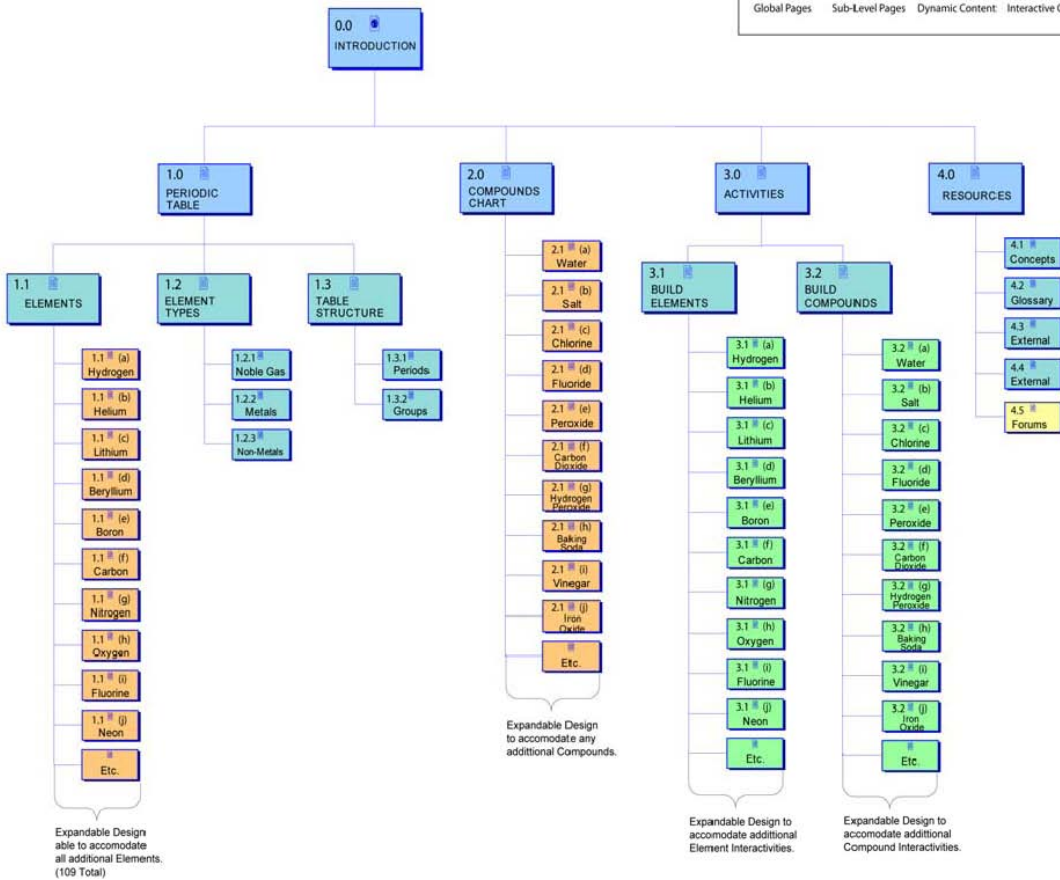
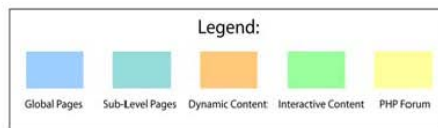


and all project creatives such as artwork, animations, illustrations, images, sounds, and other content are copyright protected.  
© 2007 Trent Wyman



# Add'em Atom

Concept Map



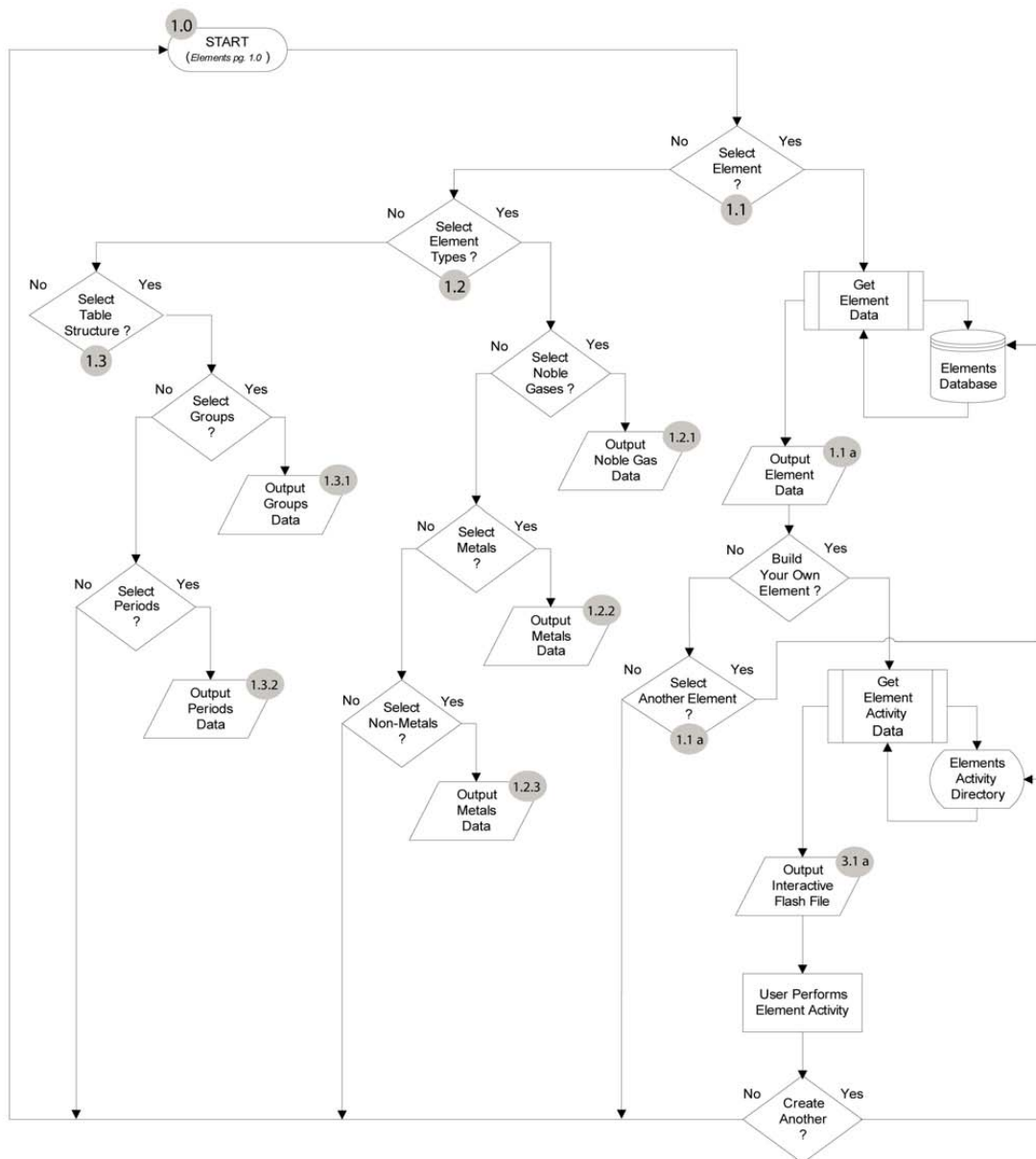
and all project creatives such as artwork, animations, illustrations, images, sounds, and other content are copyright protected.



## Add'em Atom

### Periodic Table Process Flow

Periodic Table - #1.0 Elements - #1.1 Element Info - #1.1 a Element Types - #1.2 Table Structure - #1.3 Element Activity - #3.1 a.



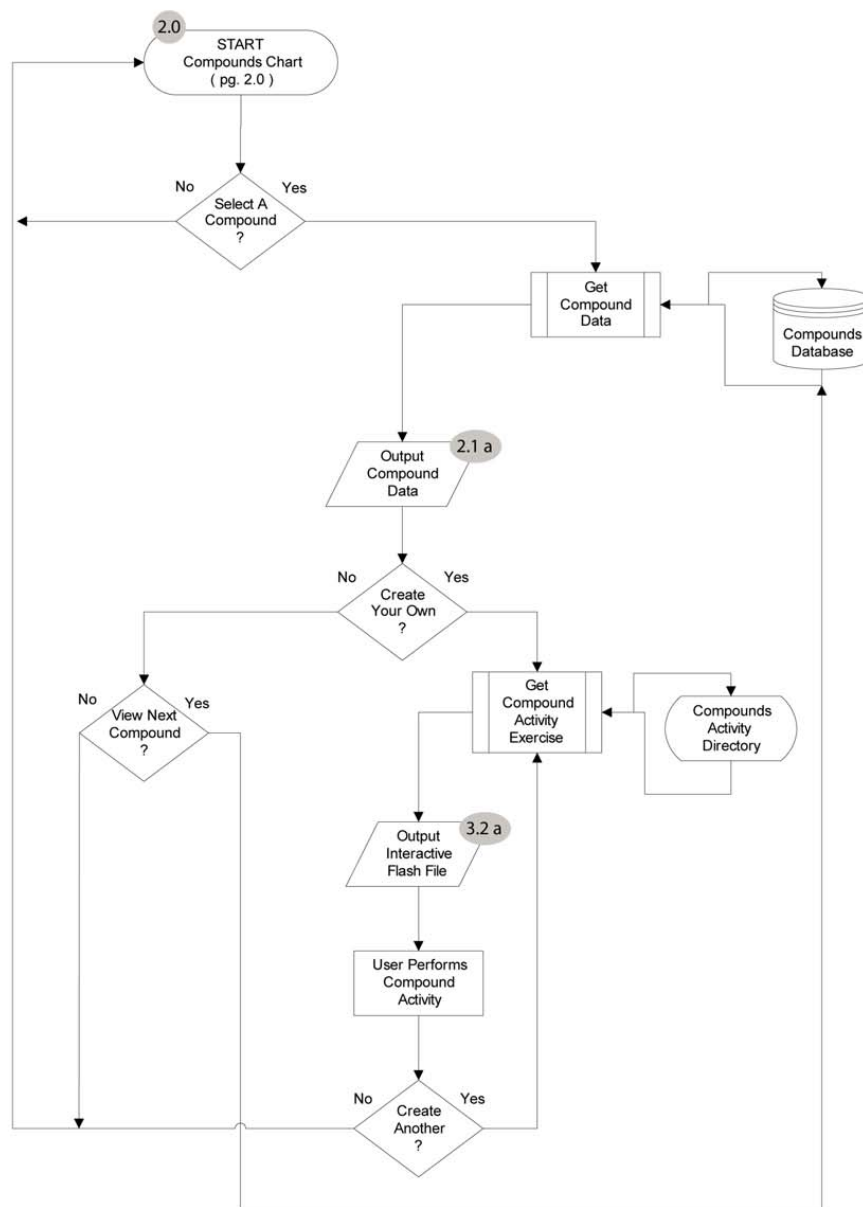
and all project creatives such as artwork, animations, illustrations, images, sounds, and other content are copyright protected.  
© 2007 Trent Wyman



## Add'em Atom

### Compounds Chart Process Flow

Compounds Chart - #2.0    Compounds - #2.1 a.    Compound Activity - #3.2 a.



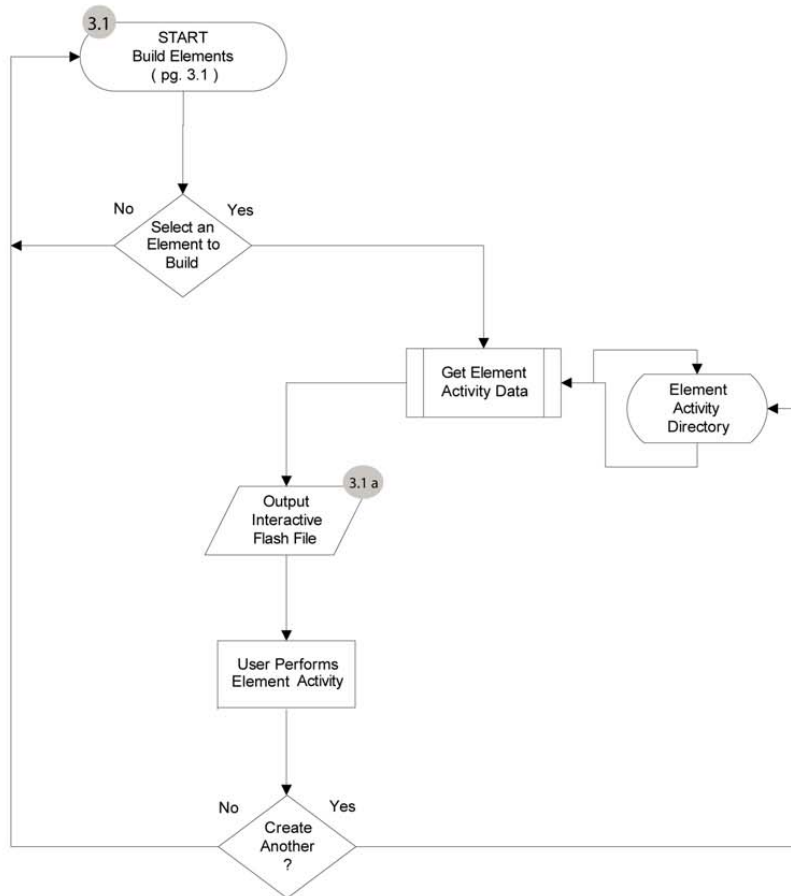
and all project creatives such as artwork, animations, illustrations, images, sounds, and other content are copyright protected.  
© 2007 Trent Wyman




## Add'em Atom

Element Activity Process Flow

Build Elements - #3.1    Element Activity - #3.1 a.



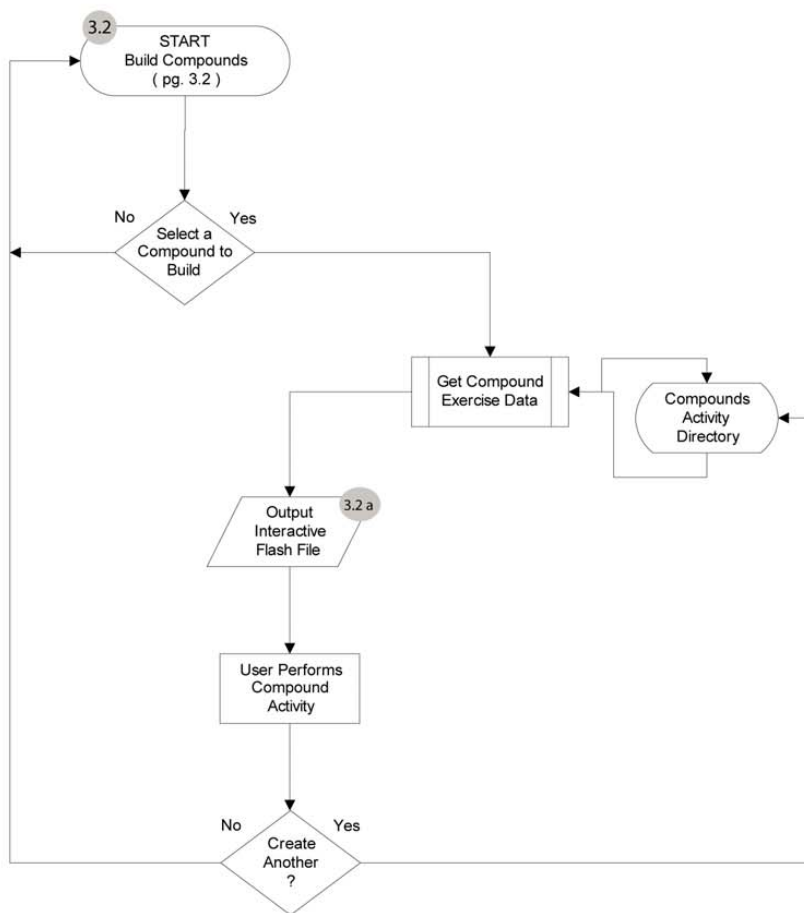
 and all project creatives such as artwork, animations, illustrations, images, sounds, and other content are copyright protected.  
© 2007 Trent Wyman



## Add'em Atom

Compound Activity Process Flow

Build Compounds - #3.2    Compound Activity - #3.2 a.



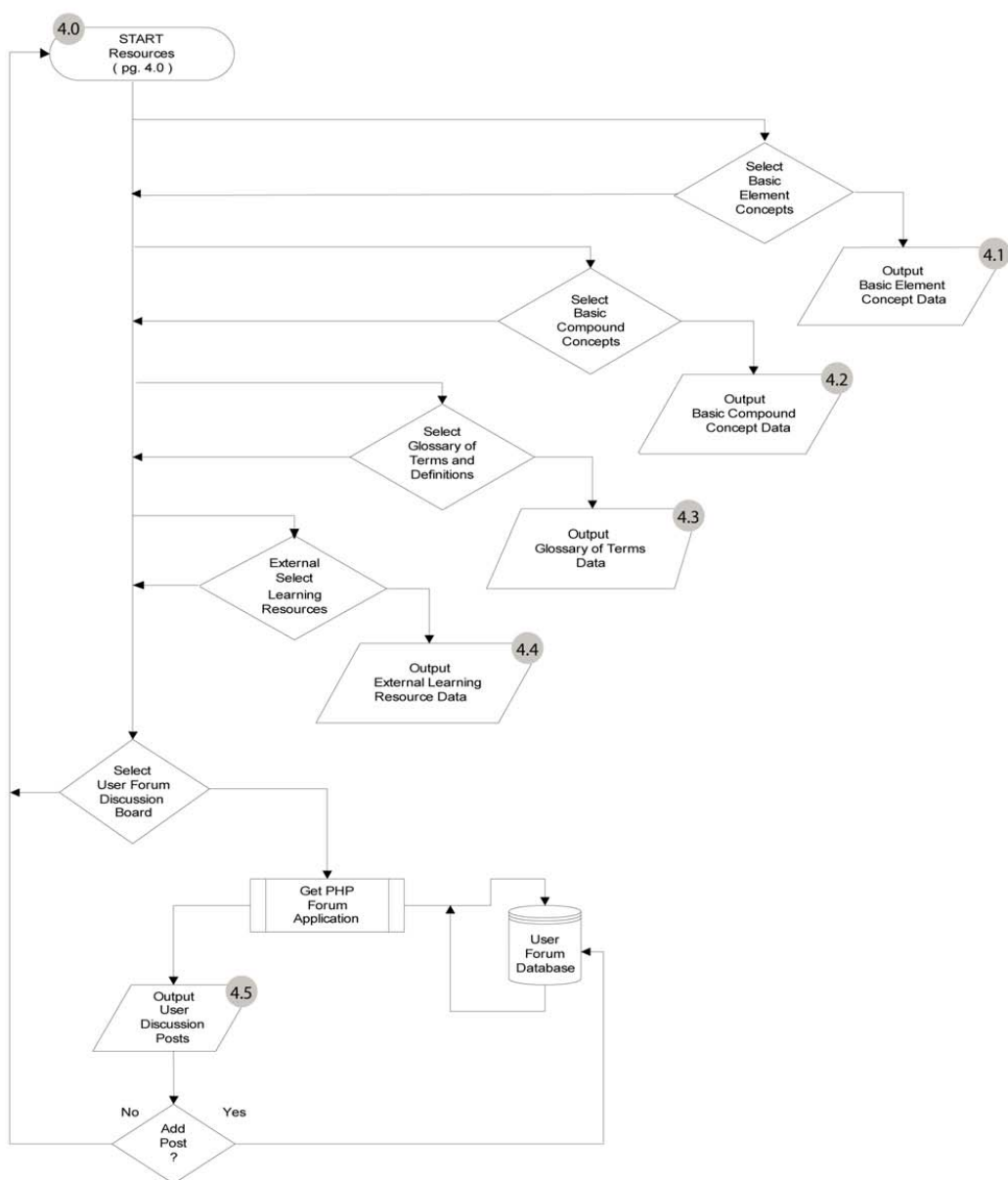
© 2007 Trent Wyman and all project creates such as artwork, animations, illustrations, images, sounds, and other content are copyright protected.



## Add'em Atom

### Resources Process Flow

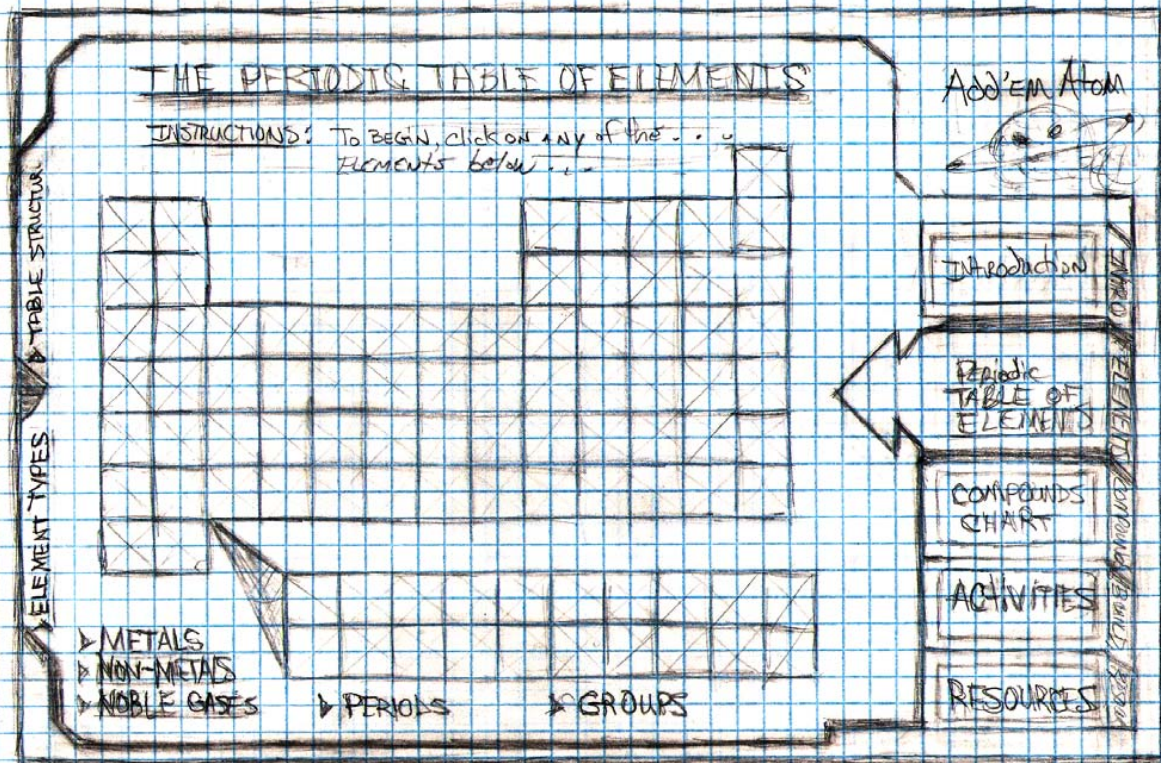
Resources - #4.0    Element Concepts - #4.1    Compound Concepts - #4.2    Glossary - #4.3    External Resources - #4.4    User Forum - #4.5

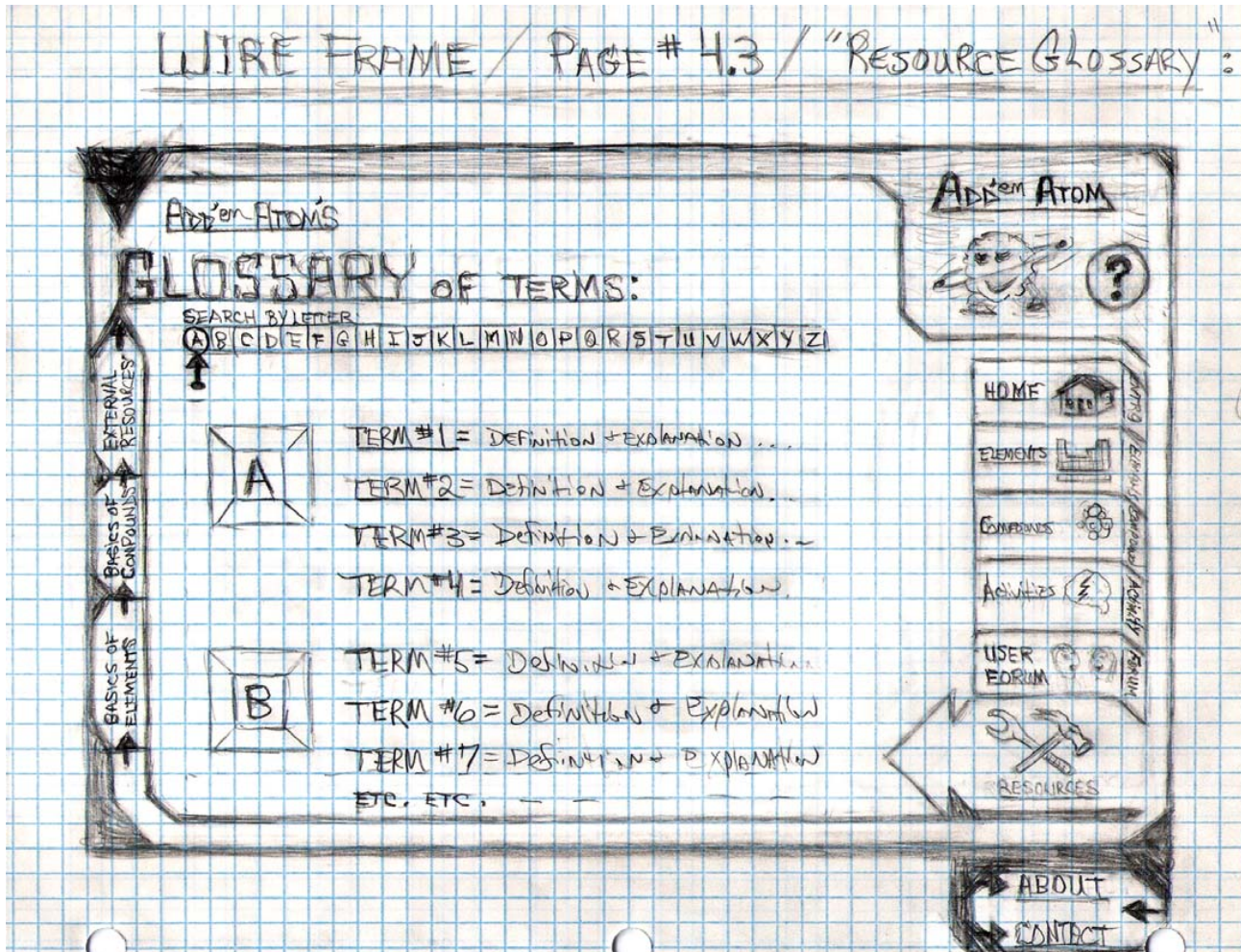


and all project creatives such as artwork, animations, illustrations, images, sounds, and other content are copyright protected.



Wireframe / PAGE # 1.0 / PERIODIC TABLE





and all project creatives such as artwork, animations, illustrations, images, sounds, and other content are copyright protected.  
© 2007 Trent Wyman